

# TAX MAP TOWNSHIP OF BARNEGAT

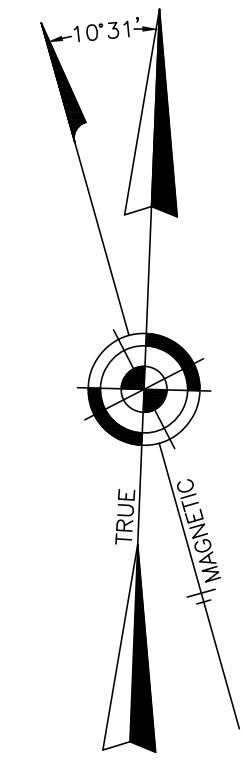
OCEAN COUNTY NEW JERSEY  
SCALE: 1" = 100' DATE: 1-18-2004

CRAIG F. REMINGTON LAND SURVEYOR LIC. NO. 23924



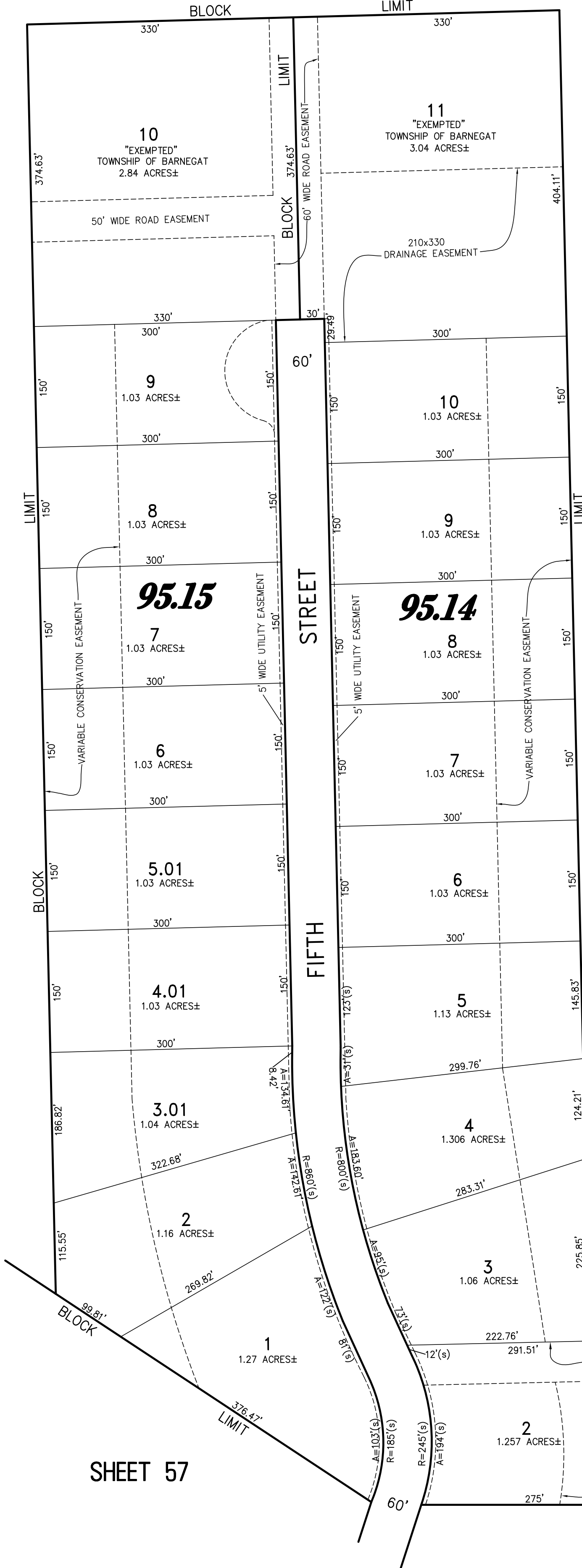
**REMINGTON, VERNICK & VENA ENGINEERS**  
9 ALLEN STREET, TOMS RIVER, N.J. 08753  
(732) 286-9220, FAX (732) 505-8416  
WEB SITE ADDRESS: WWW.RVVE.COM

"THIS TAX MAP PLATE HAS BEEN DIGITALLY DRAWN USING COMPUTER-AIDED DRAFTING/DESIGN (CADD) AND COORDINATE GEOMETRY (COGO). IT IS BASED ON THE ORIGINAL DIGITALLY DRAWN TAX MAP PLATE BEARING THE OFFICIAL NEW JERSEY DIVISION OF TAXATION APPROVAL STAMP WITH APPROVAL DATE (7-31-2006) SERIAL NUMBER (896) AND SIGNATURES OF SIGNERS' JAMES J. COLL, CHIEF, LOCAL ASSESSMENT, SANTO C. DIDONATO, SUPERVISING FIELD REPRESENTATIVE. THIS TAX MAP PLATE HAS BEEN DIGITALLY UPDATED TO REFLECT CONDITIONS AS OF 11-1-2007. THE ORIGINAL DIGITALLY DRAWN TAX MAP PLATE WITH THE OFFICIAL APPROVAL STAMP IS ON FILE WITH THE TOWNSHIP OF BARNEGAT ENGINEER."



REVISIONS		
11-1-2007	CRAIG F. REMINGTON	23924

## SHEET 44



SHEET 44

SHEET 55

SHEET 57

SHEET 53

SHEET 62

REVISED BY: REMINGTON & VERNICK ENGINEERS - 11-1-2007  
REVISED BY: REMINGTON & VERNICK ENGINEERS - 5-25-2006 - 1501P2/18

COMBINED OLD PLATE 54 AND PART OF PLATE 62